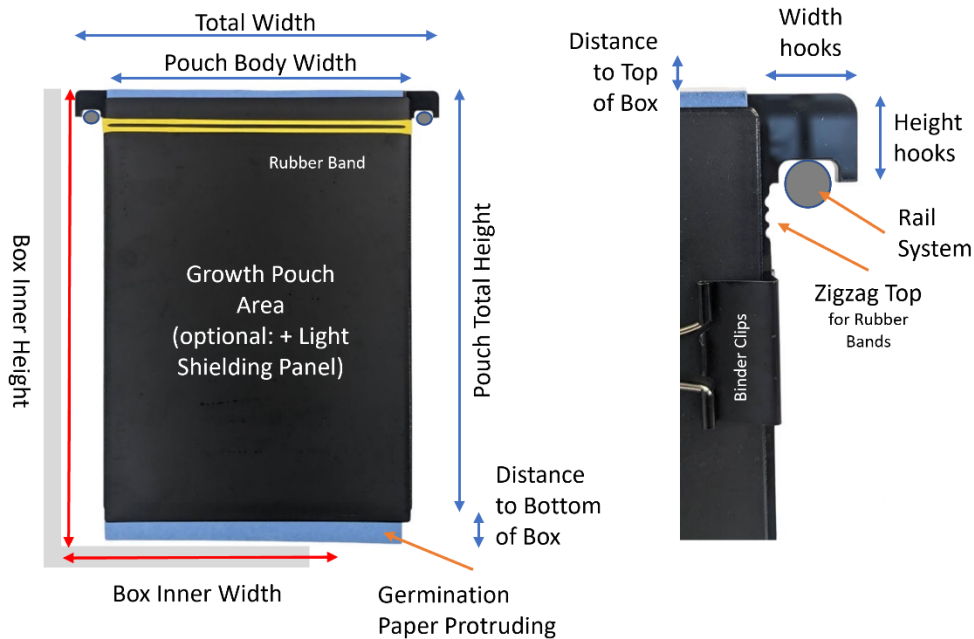


COMPANY: _____

YOUR NAME: _____

[p 1/3], 2023 v1

VSI-Growth Pouch Type 1 configuration, # _____ (please use a separate form for each design)



Number of Custom Growth Pouches: _____

(give options (e.g. 10 or 48) to calculate several quotes)

Standard material: 4 mm PMMA (acrylic), black

Note: Final product dimensions can vary ± 2 mm (on all axes) for technical reasons.

Dimension Growth Pouch Area

Pouch Body Width (cm; X2): _____

Pouch Total Height (cm, Y): _____

Hook Design

Width Hooks (cm, X1): _____

Height Hooks (cm, Y1): _____

- Standard** recess for rail system (depth 5 mm, standard width 12-15 mm, starting 5 mm from outer edge)

- Custom** recess for rail system:

Zigzag Pattern (for Rubber Bands; both sides, 3 cm)

- Top** (starting right after hook)
- Bottom** (5 cm from bottom)

Note: Final product dimensions can vary ± 2 mm (on all axes) for technical reasons.

Light Shielding Panels, 1 mm PMMA, black (Recommendation: less wide than the Pouch Body to avoid strain)

Light Shields, Quantity: _____

Light Shield Width (cm; X3): _____

Light Shield Height (cm, Y3): _____

Consumables

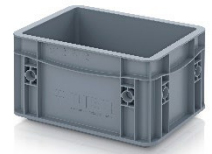
include **Rubber Bands** Qty: _____

include **Binder Clips** Qty: _____

Need help with sourcing Germination Paper? Get in contact.

Growth Pouch “Type 1” - SETS

Sets include: X number of Positioning Panels, 2x X number of Shading Panels, Storage Box with Rail System. Storage Box: flat bottom, handle grips closed, light grey color, PP; weight: approx. 1.5- 3 kg



Growth Pouch SET 1: 22.5 x 30 cm (8.86 x 11.8 inch)

- **Storage Box System** (inner dimensions: 37 cm length, 27 width, 31.5 cm height)
- **Rails** (37 cm; stainless steel, 6 mm diameter)
- **20x Pouch Positioning Panel (Body area: 22.5 cm width, 30 cm height; Hooks: 1.8 cm width, 2 cm height);** zigzag on top; positioned on rails: ~1-1.5 cm distance to bottom
- **40x Light Shielding Panels** (22 cm width, 28 cm height)

Quantity Set 1: _____

Growth Pouch SET 2: 29 x 38 cm (11.4 x 15 inch)

- **Storage Box System** (inner dimensions: 57 cm length, 37 width, 41.5 cm height)
- **Rails** (57 cm; stainless steel, 8 mm diameter)
- **30x Pouch Positioning Panel (Body area: 29 cm width, 38 cm height; Hooks: 3.5 cm width, 4 cm height);** zigzag on top; positioned on rails: ~3-3.5 cm distance to bottom
- **60x Light Shielding Panels** (28 cm width, 34 cm height)

Quantity Set 2: _____

Custom Set Configurations on request.

Manipulation Stands (Manipulation stands are used to place the Pouch Positioning Panels outside of the storage Box for Set-Up etc.; Each Stand fits one Positioning Plate):

- Manipulation Stand, angled (60°) Quantity: _____
- Manipulation Stand, upright (90°) Quantity: _____

Additional requirements (*please specify here or on additional page; please include a sketch/drawing for complex designs*):

Please fill in manually or electronically, sign and save/scan/take a photo of the form incl. all pages. *Please clearly number (#) all forms if you request quotes for several Growth Pouch designs.* Send to office@vienna-scientific.com for quoting (and as reference for pot. manufacturing). Design changes require written confirmation.

(electronic) Signature, Place, Date